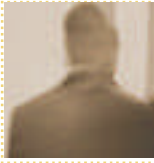


SECURITY MEETS SIMPLICITY.



Access Sentry, a visitor management software, was created to be simple to use and install. Its intuitive, graphic interface can be easily used by front desk personnel with even the most limited computer skills.

At the heart of the software package is an open database connection (ODBC) platform that ensures complete compatibility between Access Sentry and your ODBC-compliant database program. So you can be sure Access Sentry will give you maximum security with minimum effort.



OPTIONS

- Photo Capture
- Drivers License / Business Card Scanning
- Signature Capture
- Bar Code Scanning
- Web Browser Preauthorization
- Passport Scanning
- Excel Import
- Multiple DB Connectivity
- Workstation Emergency Report
- Badge Printing
- Email Notification

It's simple to use. If you know how to use Windows, you know how to use the point-and-click Access Sentry system.

It has a wide range of functions. Access Sentry lets you track just about anything that goes in or out of your facility. That includes:

- Guest logging** - for visitors entering and exiting the facility.
- Contractor logging** - for vendors visiting the facility, either short- or long-term.
- Employee logging** - for temporarily replacing lost, stolen or forgotten employee badges.
- Delivery logging** - for delivery drivers and the packages they bring/pick up.
- Restricted monitoring** - for notification of unwanted/restricted persons in the facility.
- Group logging** - for streamlining the logging process when large groups of people visit.
- Lost & found logging** - for recording items that have been lost or found in the facility.
- Re-occurring visitor** - for tracking and restoring visitor information.
- Preauthorization** - allows staff to preauthorize visitors ahead of time.
- Reporting software**
- Custom badge software**
- Customizable tabs/and fields** for renaming tab titles and select field information.

Access Sentry™

visitor management software

Call for information
800-801-2422

or visit us at
www.ci3software.com

OPTIONAL EQUIPMENT

Passport Scanner. Simple to use mini flat bed scanner, will capture accurate information from passports, drivers license and business cards.

Drivers license scanner. For capturing information from a drivers license and business card through optical character recognition.

Badge printer. A compact badge printer, it's perfect for printing professional-looking visitor badges without using a lot of desk space.

Signature pad. An easy way to collect guest signatures and keep them on file electronically.

Digital camera. Ability to capture and store photos of visitors.

Bar code scanner. 1D scanning for quick sign in and sign out of visitors.



ACCESS SENTRY TECHNICAL INFORMATION

Communication regarding any technical questions with Access Sentry should be referred to CI³ Software Technical Staff at support@ci3software.com.

Supported Client Operating Systems:

- Windows XP SP3
- Windows 7 SP1

Access Sentry Workstation Requirements:

- CPU 2.0 GHz or higher
- RAM Min 1 GB (Recommend: 2 GB or more)
- Hard Drive: 30 MB of free space for workstation (100 MB for database)
 - An additional 30-100 MB is necessary for the printer, dl/card scanners, camera, barcode scanner and signature pad.
- USB: Printer, ScanShell 800, 1000 or SnapShell Scanner. Signature Capture Pad and Camera. USB Hub: May be needed depending on the number of hardware devices being used that utilize USB.
- SVGA at 800 by 600 or higher
- CD Rom Drive
- Network Card for LAN System
- SMTP Server: Optional (required if using Email Notification)
- DirectX 8 or newer - for camera option

Supported Server Operating Systems:

- Windows XP SP3
- Windows 2003 SP2 & 2008 Server
- Windows 7 SP1

Access Sentry Server Requirements:

- CPU 2.0 GHz or higher
- RAM Min 1 GB (Recommend: 4 GB or more)
- Storage 4 GB is the recommended minimum
- SVGA at 800 by 600 or higher
- CD Rom Drive
- Network Card for LAN System

The Access Sentry database is fully compatible with Microsoft SQL Server products.

The more applications that the server is running increases size and performance requirements of the hardware. Additionally the more memory available on the server, the better performance you will get.

The data storage requirements can vary. By using the following numbers for calculation, adequate capacity should be achieved.

Visitor Information/Data	Size (KB)
Name/Text Information	1
Photo capture	20-50
Signature capture	5-15
Business card	15-50
ID Scan (2-sided)	5-15
Total with all options	46-131

If desired, Access Sentry also has the capability to connect to external ODBC compliant databases to retrieve information on a "read only" basis. This is a list of the fields that Access Sentry uses:

1. Last Name
2. First Name
3. Work Phone
4. Department Code
5. Department
6. Employee Number
7. Office Location
8. Expiration Date
9. Employee Photo